

**Refreshing vision  
Enabled ambition**



# Advanced Business **Software** for Forward Looking Dealers and Rental Firms



**e-Emphasys Technologies**



Dealer & Rental Management Software



"eXtend is the single most advanced, modern and flexible DBS, and a key enabler for realizing our strategy," William Bayer, CIO, SMS Constructions and Mining Systems Inc., Canada, A group of Sumitomo corporation.

# Forward-thinking Dealer & Rental Businesses choose eXtend





# Optimizing your business for growth and leadership

**T**he equipment distribution and rental industry is in a state of rapid change and consolidation. Dealers and rental firms with vision, growth aspiration, and customer-focused, efficient operations will be the ones leading the industry. For these companies, e-Emphasys Technologies provides eXtend – the business system for launching into the future and the platform for growth, flexibility and productivity.

Leaders in this industry adopt agile business models for rapid response to new trends and competitive situations and for a smooth introduction of new services such as rental, customer self service, asset tracking, insurance, equipment financing, preventive maintenance and RFID tracking. eXtend is the ideal software for Dealer & Rental businesses

with focus on active growth by optimizing sales, service, equipment lifecycle management and operational efficiency. With eXtend you are perfectly equipped for today and ready for tomorrow.

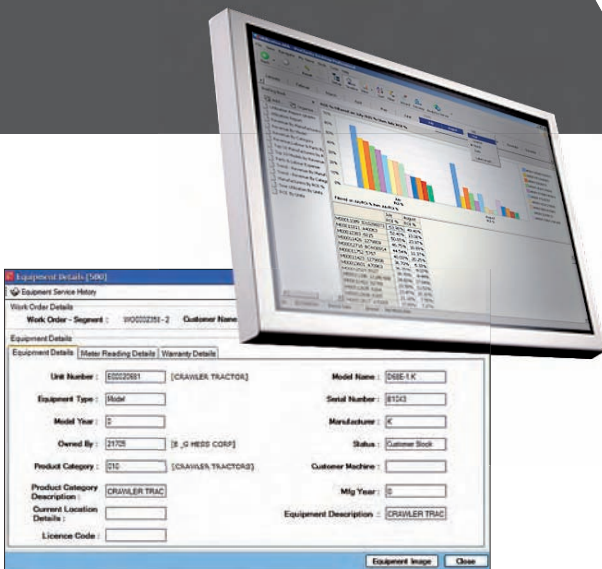
eXtend offers and supports a comprehensive set of industry's best practices, and rapid deployment tools to apply them to your organization swiftly. Moreover, eXtend has the flexibility and capability to adapt to your organization and to continue adapting as your business changes. By choosing eXtend you will obtain access to the services of e-Emphasys. e-Emphasys is a global software solution provider with a single industry focus: the Dealer & Rental business, which is the industry that matters to you!

"eXtend has the horsepower and flexibility to grow and operate our business for the next twenty years,"  
 Don Shilling, President, General Equipment and Supplies



# Grip on your business

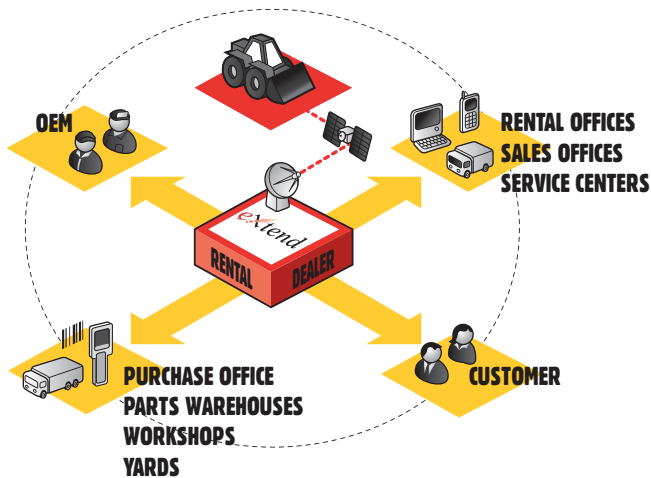
**E**xTend offers the most comprehensive dealer and rental functionality in the market, is easy to use and highly scalable for large organizations. eXtend is the most complete product for the Dealer & Rental Industry. It covers all your business processes including equipment lifecycle management (ELM) for holistic optimization of your fleet performance, customer relationship management (CRM) optimizing all your customer interactions, rental (rent-to-rent and rent-to-sale), sales, insurance services, field service (including mobile applications), help desk, parts planning and logistics, warranty and claim management, preventive maintenance, accounting, business intelligence, OEM collaboration, project management, RFID, bar code scanning and telematics integration for equipment tracking through satellite. Furthermore, with ExtendedApps, new functionality can be added to an existing eXtend solution. Whatever the market requires, you will be able to respond quickly.



eXtend enables innovative dealer organizations and rental service providers to grow and optimize their businesses.

**Refreshing vision  
 Enabled ambition**

# Instant ROI



**E**e-Emphasys is a global IT company with offices in North America, Europe, and Asia. Deep knowledge of the industry and technology, combined with high quality offshore and outsourcing capabilities make e-Emphasys your ideal partner for delivering end-to-end Dealer & Rental solutions. Rapid implementations, instant ROI and the future-proof eXtend solution differentiate e-Emphasys from the rest of the market. Among the customers of e-Emphasys are: Hitachi, Sumitomo, Komatsu, Tracey Road Equipment, General Equipment and Supplies, Coneco Equipment, Tokyo Electron, DENSEI Lambda, Kuhn Baumachinen, Tioga Pipe Supply and Flexco.



## Contact us

### World Wide Locations

#### Corporate Headquarter

e-Emphasys Technologies Inc.  
2501 Weston Parkway,  
Suite 101,  
Cary, NC 27513,  
USA.

Phone: + 1 - 919 - 657 - 6565  
Fax: + 1 - 919 - 657 - 0773  
e-mail: [info@e-emphasys.com](mailto:info@e-emphasys.com)

#### Japan

e-Emphasys Technologies Japan Ltd.  
Dempa Building,  
1-11-15 Higashigotanda Shinagawa-Ku,  
Tokyo, 141-0022,  
Japan.

Phone: + 81 - 3 - 5793 - 8011  
Fax: + 81-3 - 5793 - 8015.  
e-mail: [info.japan@e-emphasys.com](mailto:info.japan@e-emphasys.com)

#### Europe

e-Emphasys Technologies B. V.  
Stationsplein 43  
3818 LE Amersfoort,  
The Netherlands.  
e-mail: [info.europe@e-Emphasys.com](mailto:info.europe@e-Emphasys.com)

#### India

e-Emphasys Systems Pvt. Ltd.  
Unit 88, SDF III, SEEPZ-SEZ  
Mumbai-400 096.  
India.

Phone: + 91 - 22 - 67676300  
Fax: + 91 - 22 - 67676363  
e-mail: [info.India@e-emphasys.com](mailto:info.India@e-emphasys.com)

### Visit us at

[www.e-emphasys.com](http://www.e-emphasys.com)



**e-Emphasys Technologies**

